

U.S. TSUBAKI POWER-LOCK®

SELF-CONTAINED THIN PROFILE

TF Metric Series

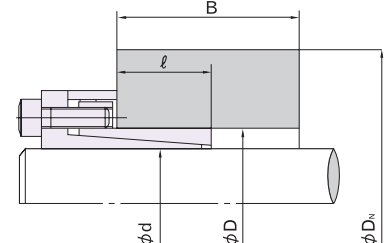
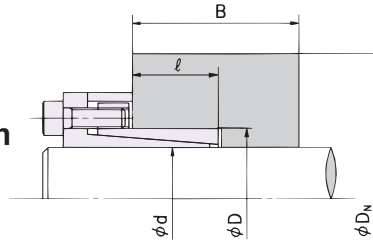
Installing to hubs with a guide portion

when $B \geq 2\ell$
(See Installation Example A)

Installing to hubs without a guide portion

when $B \geq 2\ell$
(See Installation Example B)

D_N is the minimum hub diameter required to tolerate P' or the pressure exerted from within the hub.



Installation Example A
When installing to hubs with a guide portion, the hub configuration coefficient is as follows:
 $K_3=0.8$

Installation Example B
When installing to hubs without a guide portion, the hub configuration coefficient is as follows:
 $K_3=0.8$

<EXAMPLE> Hub Material Yield Point = 35500 psi
PL030X041TF = 2.154" min. hub diameter

Min. Hub Dia. (D_N in inches)

Model Number	Hub Contact Pressure P' (psi)	Yield Point and Material examples									
		147 Mpa	176 Mpa	206 Mpa	225 Mpa	245 Mpa	274 Mpa	294 Mpa	343 Mpa	392 Mpa	441 Mpa
		21300 psi	25500 psi	29900 psi	32600 psi	35500 psi	39700 psi	42600 psi	49700 psi	56900 psi	64000 psi
				1010 304SS 316SS	1015 1118	1020	1030	1035 1040 1144	1045	1055	
PL006X012 TF	13489	0.825	0.742	0.690	0.666	0.646	0.624	0.612	0.589	0.573	0.560
PL007X012 TF	13489	0.825	0.742	0.690	0.666	0.646	0.624	0.612	0.589	0.573	0.560
PL008X015 TF	15519	1.149	1.005	0.919	0.882	0.850	0.816	0.797	0.762	0.737	0.719
PL010X018 TF	14794	1.325	1.171	1.078	1.036	1.002	0.963	0.942	0.903	0.875	0.855
PL011X018 TF	14794	1.325	1.171	1.078	1.036	1.002	0.963	0.942	0.903	0.875	0.855
PL012X020 TF	13344	1.365	1.229	1.144	1.106	1.074	1.037	1.017	0.979	0.952	0.932
PL014X022 TF	12038	1.409	1.288	1.210	1.174	1.144	1.109	1.090	1.054	1.028	1.008
PLX15X023 TF	18855	2.188	1.786	1.579	1.493	1.425	1.350	1.311	1.238	1.188	1.152
PL016X024 TF	18130	2.166	1.801	1.605	1.524	1.457	1.385	1.347	1.276	1.227	1.190
PL018X026 TF	18275	2.371	1.964	1.748	1.658	1.585	1.506	1.463	1.386	1.332	1.292
PL019X027 TF	17695	2.365	1.986	1.779	1.692	1.621	1.543	1.501	1.424	1.371	1.331
PL020X028 TF	17115	2.362	2.007	1.809	1.724	1.655	1.579	1.538	1.462	1.409	1.370
PL022X032 TF	10733	1.931	1.788	1.693	1.649	1.612	1.569	1.545	1.500	1.467	1.442
PL024X034 TF	10153	1.999	1.861	1.769	1.726	1.689	1.647	1.623	1.578	1.546	1.521
PL025X034 TF	10153	1.999	1.861	1.769	1.726	1.689	1.647	1.623	1.578	1.546	1.521
PL028X039 TF	13199	2.643	2.384	2.221	2.148	2.086	2.016	1.977	1.905	1.853	1.814
PL030X041 TF	12473	2.681	2.439	2.284	2.214	2.154	2.086	2.049	1.978	1.927	1.889
PL032X043 TF	11893	2.736	2.504	2.355	2.286	2.228	2.161	2.124	2.055	2.004	1.967
PL035X047 TF	11313	2.911	2.681	2.530	2.460	2.401	2.333	2.295	2.224	2.173	2.134
PL038X050 TF	10733	3.017	2.793	2.646	2.577	2.519	2.452	2.414	2.343	2.292	2.253
PL040X053 TF	10153	3.117	2.901	2.758	2.691	2.633	2.567	2.530	2.460	2.409	2.371
PL042X055 TF	9863	3.193	2.981	2.838	2.771	2.714	2.648	2.611	2.541	2.490	2.451
PL045X059 TF	11893	3.754	3.436	3.231	3.136	3.056	2.965	2.915	2.819	2.750	2.698
PL048X062 TF	11313	3.840	3.536	3.337	3.245	3.167	3.078	3.028	2.934	2.866	2.815
PL050X065 TF	10733	3.922	3.631	3.440	3.350	3.274	3.187	3.139	3.046	2.980	2.929
PL055X071 TF	9138	3.996	3.753	3.588	3.511	3.444	3.367	3.324	3.241	3.181	3.135
PL060X077 TF	8412	4.203	3.971	3.812	3.737	3.672	3.597	3.554	3.474	3.414	3.369
PL065X084 TF	7687	4.450	4.228	4.075	4.002	3.939	3.865	3.824	3.745	3.686	3.642
PL070X090 TF	9718	5.193	4.853	4.625	4.517	4.426	4.320	4.261	4.148	4.066	4.004
PL075X095 TF	9138	5.347	5.021	4.801	4.697	4.608	4.505	4.447	4.337	4.256	4.195
PL080X100 TF	11458	6.235	5.733	5.406	5.254	5.126	4.979	4.898	4.744	4.632	4.548
PL085X106 TF	10878	6.437	5.952	5.633	5.485	5.358	5.214	5.133	4.980	4.869	4.786
PL090X112 TF	10443	6.671	6.194	5.877	5.729	5.603	5.458	5.378	5.224	5.113	5.028

D - PT COMPONENTS